

Main South Road Duplication Project – Stage 2

Night works

We're doubling the capacity of Main South Road from Aldinga to Sellicks Beach to improve safety and make your journey more reliable.

When

Sunday 16 and Monday 17 February 2025

Hours of work

Night works between 7pm and 7am

Where


Norman Road intersection with Main South Road


More information


www.fcalliance.com.au

info@fcalliance.com.au

1300 896 826 (24hrs)

 Safer access onto and across Main South Road

 Improving safety and making your journey more reliable

 Supporting over 400 jobs each year

The \$810 million Fleurieu Connections project is jointly funded by the Australian and South Australian governments.

What's happening

We'll be undertaking asphalt works on Norman Road at the intersection of Main South Road.

How this affects you

On Sunday 16 February and Monday 17 February 2025, Norman Road intersection with Main South Road will be temporarily closed between 7pm and 7am and re-open each morning.

During this time, all traffic will be detoured via Justs Road and Sellicks Beach Road. Please see map overleaf for more information.

Some noise disturbance can be expected, but we'll try to keep these disturbances to a minimum. Please follow traffic management directions while work is in progress.

In addition, we will contact you if the work may directly impact your property, however, local access will be maintained.

Adverse weather may impact our works, but we'll keep you updated via our website.



Australian Government

BUILDING AUSTRALIA



Government of South Australia

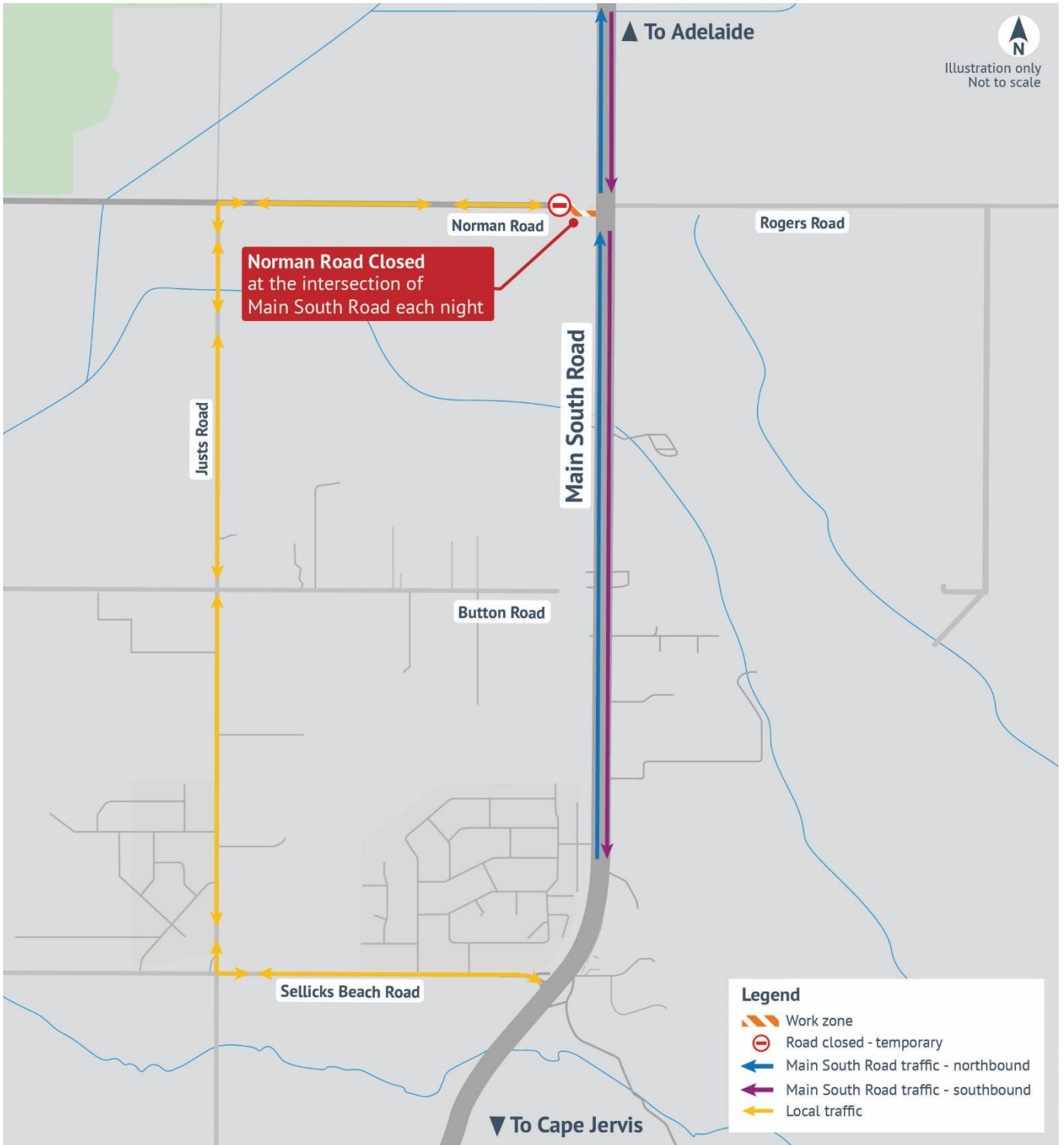
Department for Infrastructure and Transport

SA IS BUILDING
➔

Delivered by

FLEURIEU CONNECTIONS ALLIANCE

Changed Traffic Conditions – Norman Road temporarily closed



On Sunday 16 February and Monday 17 February 2025, Norman Road intersection with Main South Road will be temporarily closed between 7pm and 7am and re-open each morning.

During this time, all traffic will be detoured via Justs Road and Sellicks Beach Road.