

# Main South Road Duplication Project – Stage 2

## Night works

**We're doubling the capacity of Main South Road from Aldinga to Sellicks Beach to improve safety and make your journey more reliable.**

The \$810 million Fleurieu Connections project is jointly funded by the Australian and South Australian governments.

## What's happening

We'll be undertaking works on the eastern side of Main South Road to construct the new southbound carriageway, including drainage work, installation of lighting and pavement work.

## How this affects you

**From 6am Monday 24 February until early May 2025, the intersection of Rogers Road and Main South Road will be temporarily closed at all times.**

During this time, a detour for all traffic will be in place via Aldinga Road or Hahn Road and Plains Road. Please see map overleaf for more information.

Some noise disturbance can be expected, but we'll try to keep these disturbances to a minimum. Please follow traffic management directions while work is in progress.

In addition, we will contact you if the work may directly impact your property, however, local access will be maintained.

**Adverse weather may impact our works, but we'll keep you updated via our website.**

### When

From Monday 24 February until early May 2025

### Hours of work

**24 hours a day**

### Where

Rogers Road at the intersection of Main South Road

### More information

[www.fcalliance.com.au](http://www.fcalliance.com.au)

[info@fcalliance.com.au](mailto:info@fcalliance.com.au)

1300 896 826 (24hrs)



Safer access onto and across Main South Road



Improving safety and making your journey more reliable



Supporting over 400 jobs each year



Australian Government

**BUILDING AUSTRALIA**



Government of South Australia

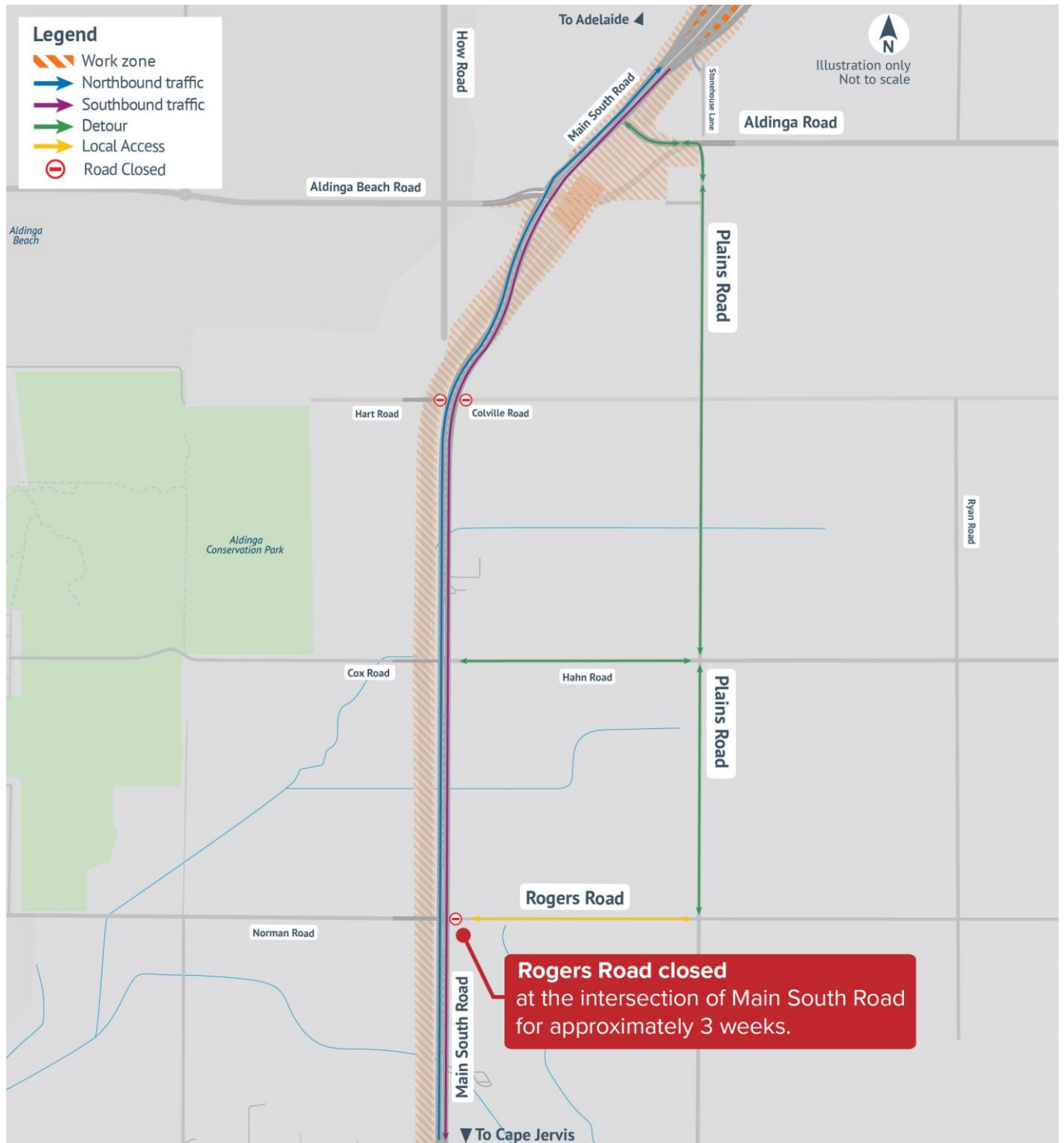
Department for Infrastructure and Transport

**SA IS BUILDING**  
➔

Delivered by

**FLEURIEU CONNECTIONS ALLIANCE**

## Changed Traffic Conditions – Rogers Road temporary closure



From 6am Monday 24 February until early May 2025, the intersection of Rogers Road and Main South Road will be temporarily closed at all times. During this time, a detour for all traffic will be in place via Aldinga Road or Hahn Road and Plains Road.