

Main South Road Duplication Project – Stage 2

Temporary Road Closure - Plains Road

We're doubling the capacity of Main South Road from Aldinga to Sellicks Beach to improve safety and make your journey more reliable.

The \$810 million Fleurieu Connections project is jointly funded by the Australian and South Australian governments.

What's happening

We'll be undertaking earthworks, pavement and asphalt works and installing drainage and lighting on Plains Road.

How this affects you

Plains Road, between Aldinga Road and Aldinga Beach Road, will be **temporarily closed from 6pm Sunday 2 February until 6pm Saturday 8 February 2025**. During this time, a detour via Hahn Road will be in place. Please see map overleaf for more information. During this time there will be a combination of both day and night work.

Some noise disturbance can be expected, but we'll try to keep these disturbances to a minimum. Please follow traffic management directions while work is in progress.

In addition, we will contact you if the work may directly impact your property, however, local access will be maintained.

Adverse weather may impact our works, but we'll keep you updated via our website.



Australian Government
BUILDING AUSTRALIA



Government of South Australia
Department for Infrastructure and Transport

SA IS BUILDING
➔

Delivered by

FLEURIEU CONNECTIONS ALLIANCE

When

Sunday 2 February to Saturday 8 February 2025

Hours of work

Day works between 6am and 6pm and **night works** between 6pm and 6am.

Where

Plains Road between Aldinga Beach Road and Aldinga Road

More information

www.fcalliance.com.au

info@fcalliance.com.au

1300 896 826 (24hrs)



Safer access onto and across Main South Road

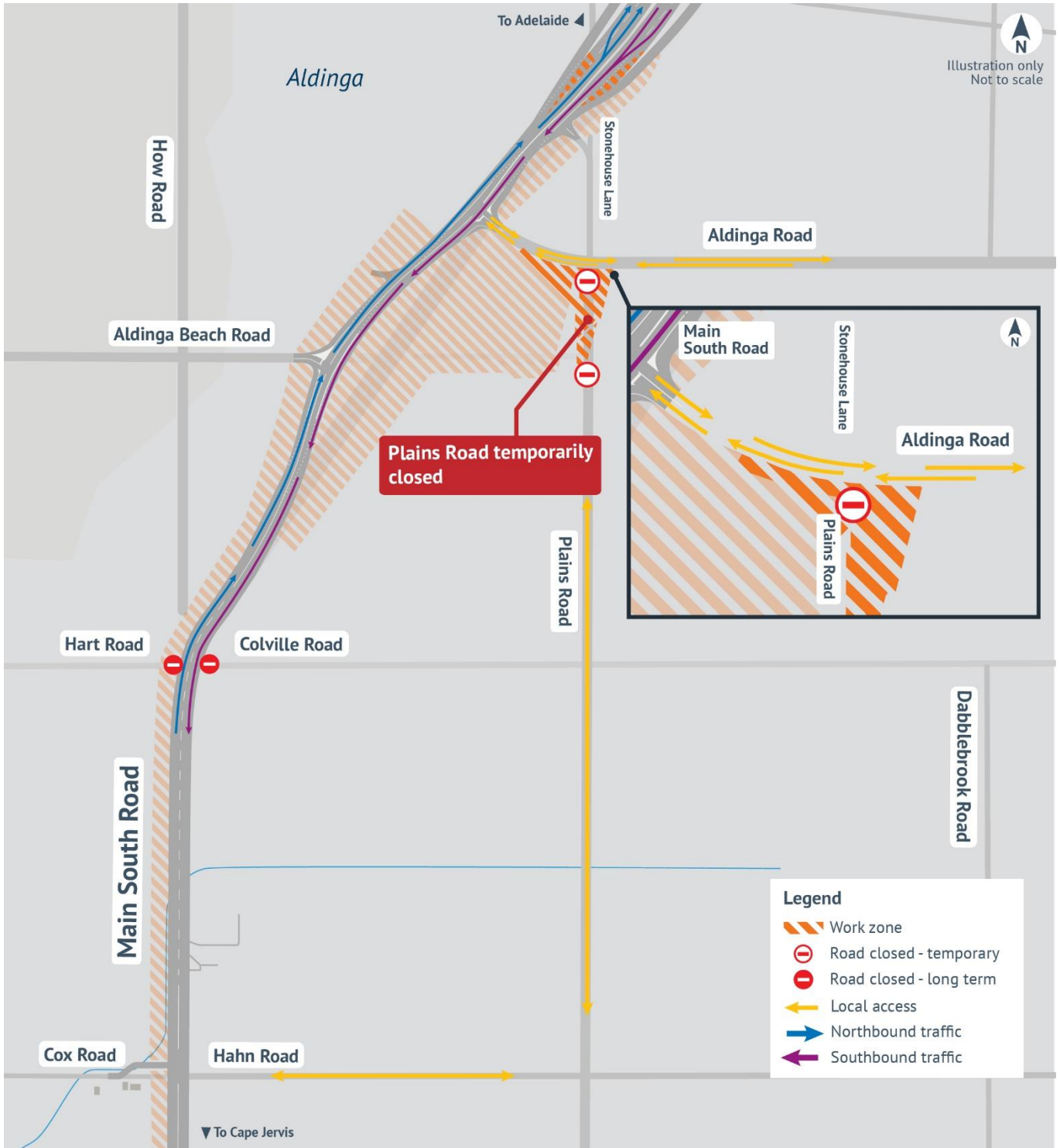


Improving safety and making your journey more reliable



Supporting over 400 jobs each year

Changed Traffic Conditions – Plains Road temporary closure



Plains Road, between Aldinga Road and Aldinga Beach Road will be **temporarily closed from 6pm Sunday 2 February until 6pm Saturday 8 February 2025**. During this time, a detour via Hahn Road will be in place and local access will be maintained.