

MAIN SOUTH ROAD AND ESPIAL STREET INTERSECTION

As part of the Main South Road Duplication Project, the new intersection at Espial Street will improve safety for local traffic.

What to expect

Changes to traffic arrangements include:

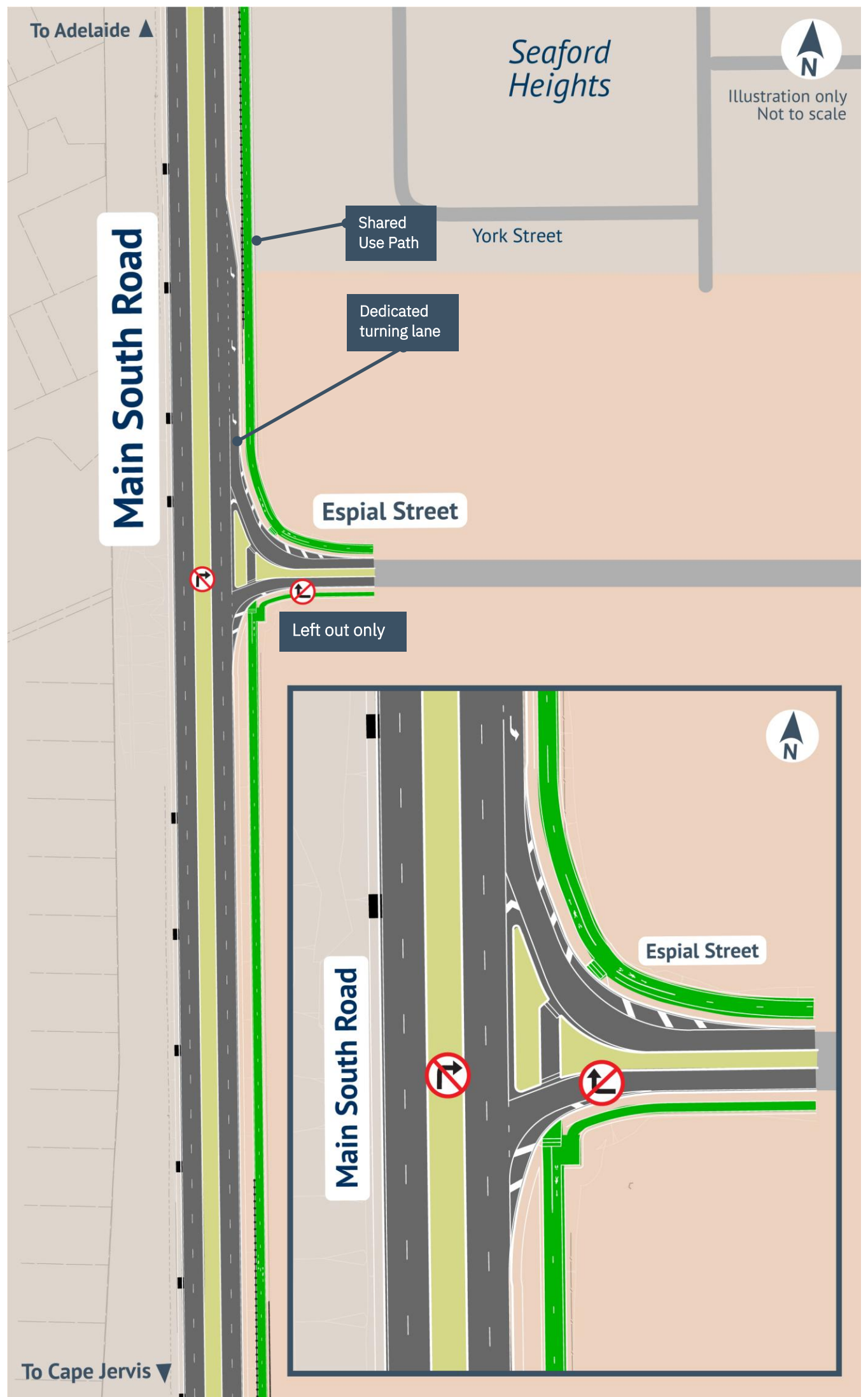
- southbound traffic on Main South Road will have a dedicated left turn lane when turning onto Espial Street;
- northbound traffic from Main South Road cannot turn right onto Espial Street;
- traffic exiting Espial Street can only turn left onto Main South Road and head south; and
- Cyclists and pedestrians can use the Shared Use Path, which will run from the corner of Robinson Road, connecting Espial Street and Bakewell Drive on the eastern side of Main South Road.

U-turns:

- U-turn functions are available for traffic in both directions at the signalised intersections on Tatchilla Road and Port Road;
- for southbound traffic, a U-turn facility is located between Branson Road and Malpas Road; and
- for northbound traffic, a U-turn facility is located between Thomas Road and Sherriff Road.

Find out more

Scan this QR code or contact the FCA team using the details below.



 1300 896 826

 info@fcalliance.com.au

 www.fcalliance.com.au



Australian Government



Government of South Australia