

DETOUR MAP - Main South Road - Port Road underpass

Monday, 22 January to Monday, 12 February 2024

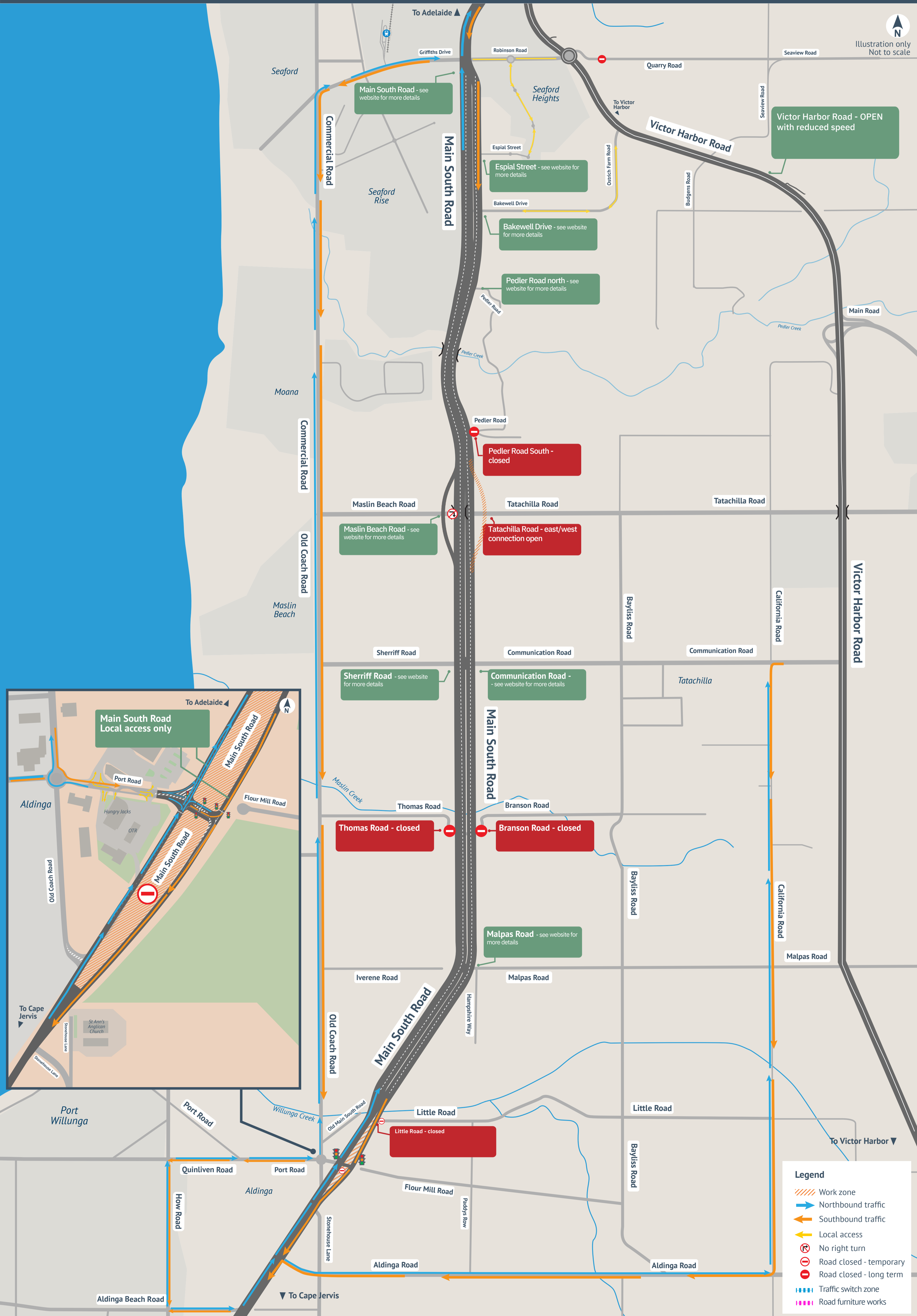
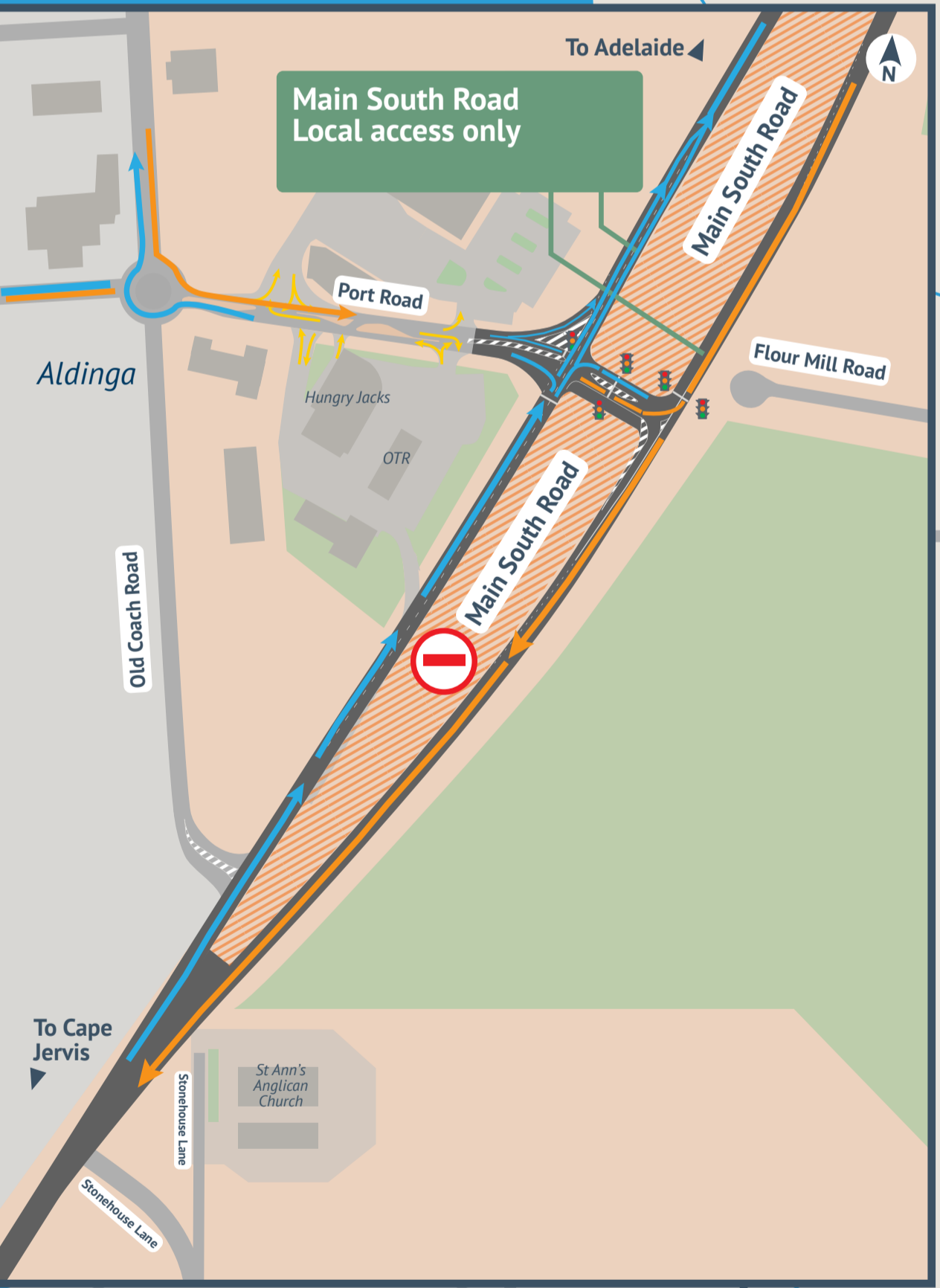


Illustration only
Not to scale



Legend

- ▨ Work zone
- ➔ Northbound traffic
- ➔ Southbound traffic
- ➔ Local access
- ⊘ No right turn
- ⊘ Road closed - temporary
- ⊘ Road closed - long term
- Traffic switch zone
- Road furniture works