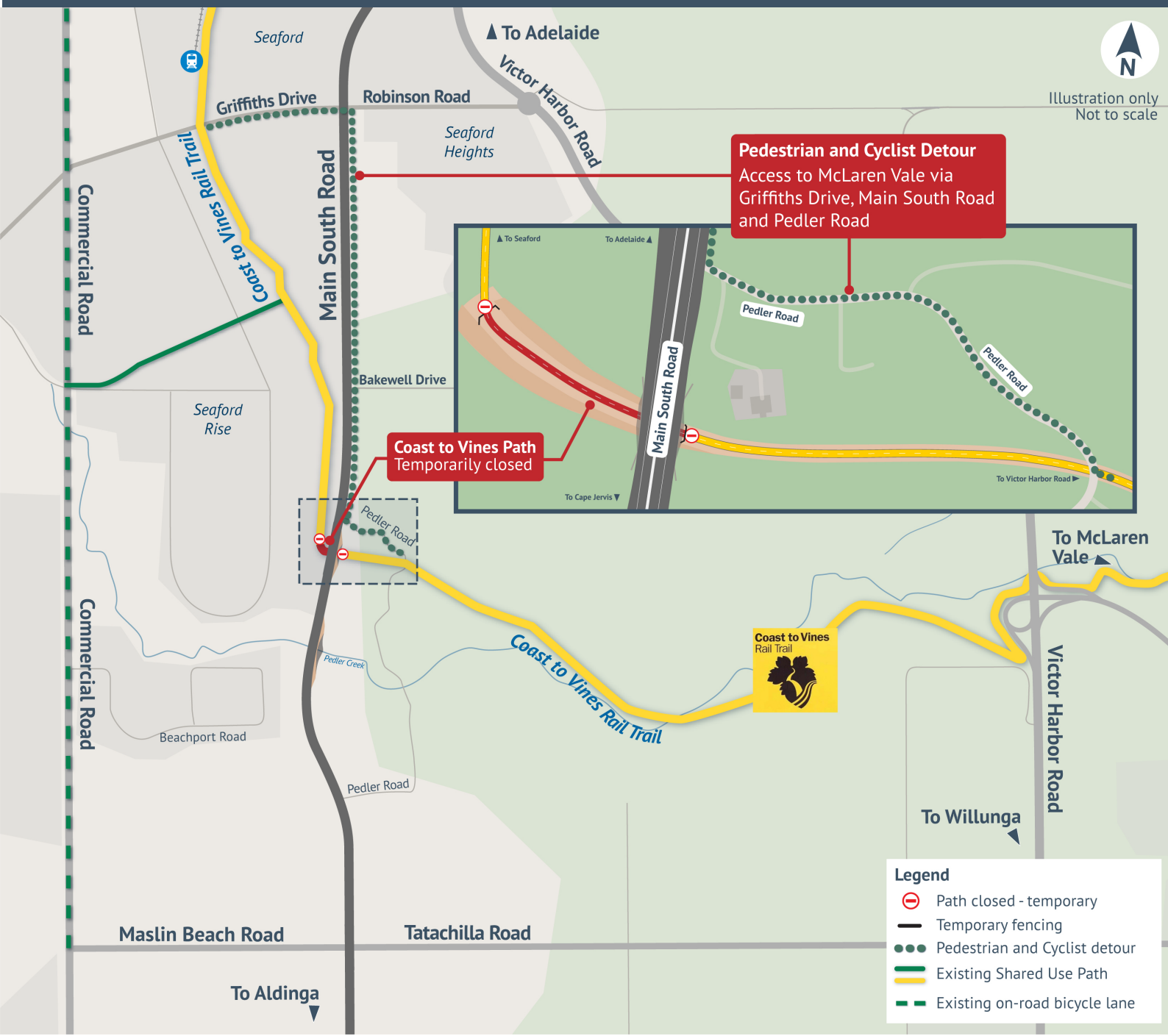


DETOUR MAP - Main South Road - Coast to Vines Rail Trail underpass will be fully closed to cyclists and pedestrians. The detour will be between Robinson Road and Pedler Road between Tuesday, 2 April and Wednesday, 17 April 2024.



Australian Government

**BUILDING AUSTRALIA**



Government  
of South Australia  
Department for Infrastructure  
and Transport

Delivered by

**FLEURIEU  
CONNECTIONS  
ALLIANCE**