

# Main South Road Duplication Project – Stage 2

## Works update

**We're doubling the capacity of Main South Road from Aldinga to Sellicks Beach to improve safety and make your journey more reliable.**

The \$810 million Fleurieu Connections project is jointly funded by the Australian and South Australian governments.

## What's happening

We're starting construction of the new southbound carriageway on the eastern side of Main South Road at Perth Street.

## How this affects you

To complete these works safely, the dedicated right turn lane into Perth Street will be temporarily removed. The right turn into Perth Street from Main South Road **will be maintained**.

Speed and lane restrictions will remain in place throughout the area and some noise disturbance can be expected, but we'll try to keep these to a minimum.

These works are not expected to impact any properties; however, we will contact you if the work may impact your property.

Adverse weather may impact our works and scheduling, but we'll keep you updated via our website.

### When

From 1 November until mid-2025

### Hours of work

24 hours a day

### Where

Perth Street and Main South Road

### More information

Visit

[www.fcalliance.com.au](http://www.fcalliance.com.au)

Email

[info@fcalliance.com.au](mailto:info@fcalliance.com.au)

Call 1300 896 826  
(24hrs)



Safer access onto and across Main South Road



Improving safety and making your journey more reliable



Supporting over 400 jobs each year



Australian Government

**BUILDING AUSTRALIA**



Government of South Australia

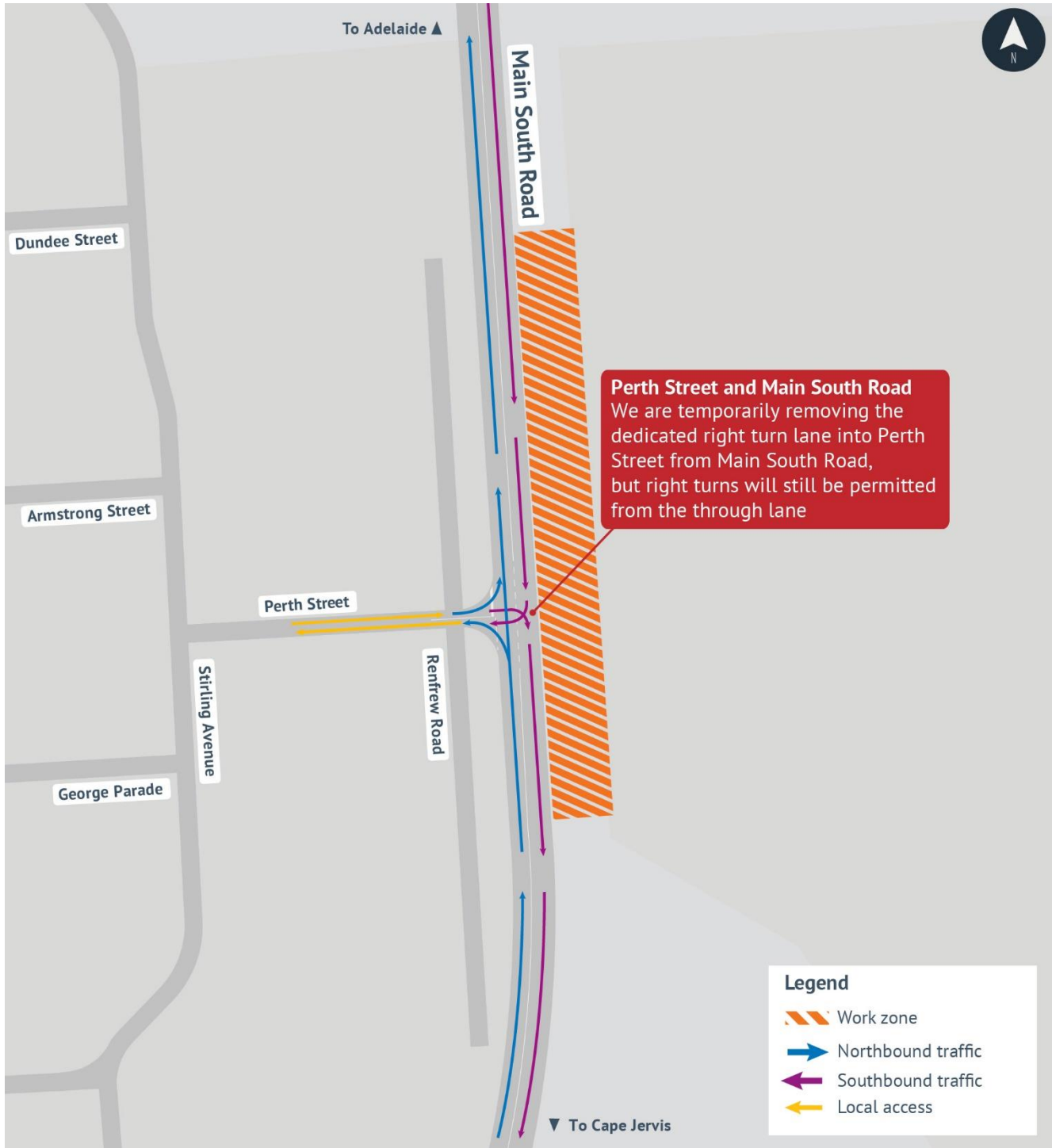
Department for Infrastructure and Transport



Delivered by

**FLEURIEU CONNECTIONS ALLIANCE**

# Main South Road and Perth Street - Changed traffic conditions



From 1 November until mid-2025, we are temporarily removing the dedicated right turn lane into Perth Street from Main South Road, but right turns will still be permitted from the through lane.