

Main South Road Duplication Project – Stage 2

Night works

We're doubling the capacity of Main South Road from Aldinga to Sellicks Beach to improve safety and make your journey more reliable.

When

From Sunday 27 October until Saturday 9 November 2024

Hours of work

Day works between 7am and 6pm and **night works** between 7pm and 6am.

Where

Plains Road and Aldinga Road

More information

www.fcalliance.com.au

info@fcalliance.com.au

Call

1300 896 826 (24hrs)

The \$810 million Fleurieu Connections project is jointly funded by the Australian and South Australian governments.

What's happening

We'll be undertaking earthworks, drainage and lighting installation, pavement construction and asphalt works on Plains Road and Aldinga Road.

How this affects you

Plains Road, between Aldinga Road and Aldinga Beach Road will be temporarily closed from **7pm Sunday 27 October until 6pm Wednesday 6 November 2024**. During this time, a detour via Hahn Road will be in effect. Please see map overleaf for more information.

From **7pm Wednesday 6 November until 6am Saturday 9 November** Aldinga Road, east of Plains Road will be closed for night works. A detour via Bayliss and Ryan Road will be in effect. Please see map overleaf more information. Outside of night work hours, Aldinga Road will reopen, with speed restrictions in place.

Some noise disturbance can be expected, but we'll try to keep these disturbances to a minimum. Please follow traffic management directions while work is in progress. In addition, we will contact you if the work may directly impact your property, however, local access will be maintained.

Adverse weather may impact our works, but we'll keep you updated via our website.



Safer access onto and across Main South Road



Improving safety and making your journey more reliable



Supporting over 400 jobs each year



Australian Government

BUILDING AUSTRALIA



Government of South Australia

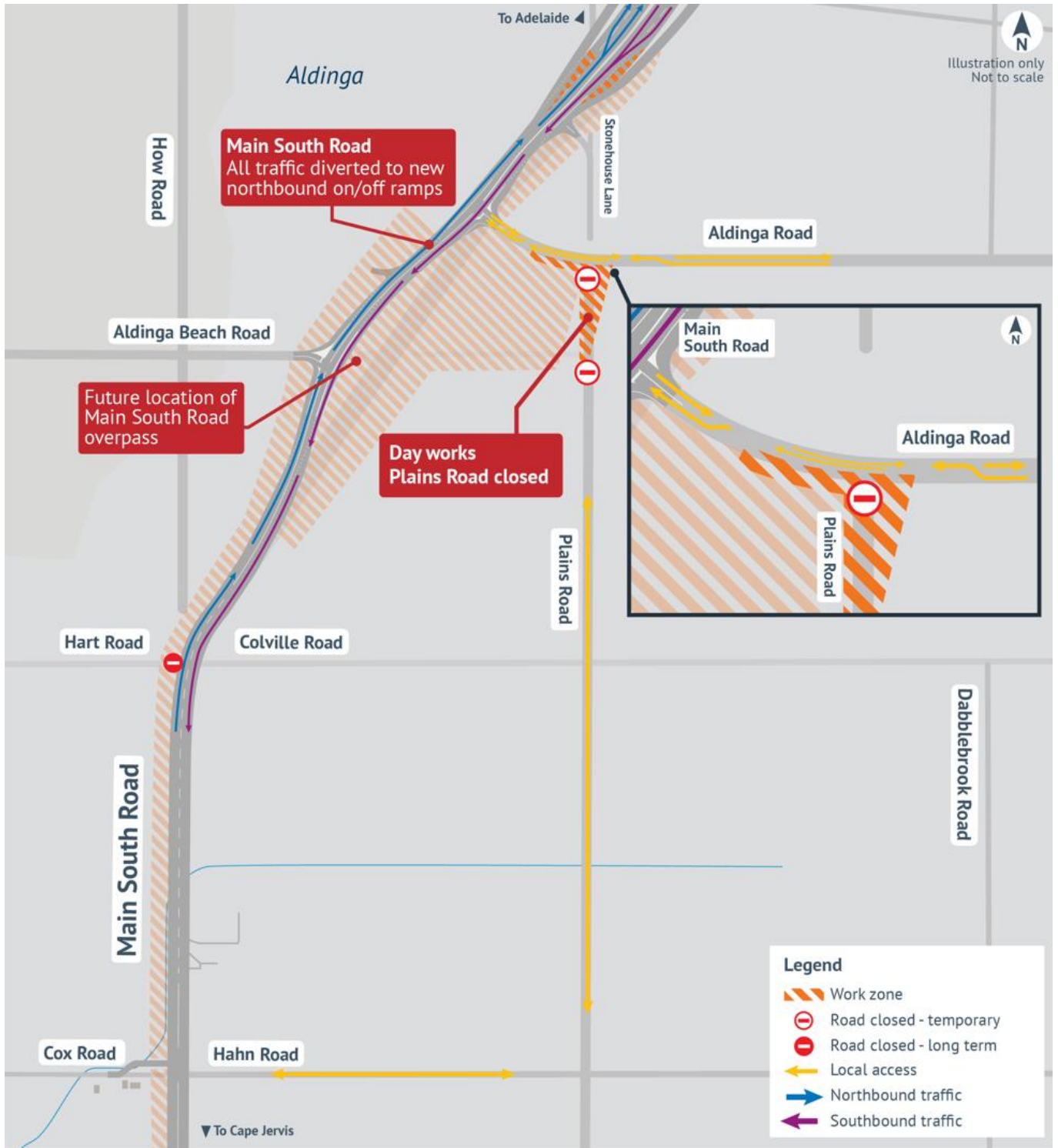
Department for Infrastructure and Transport



Delivered by

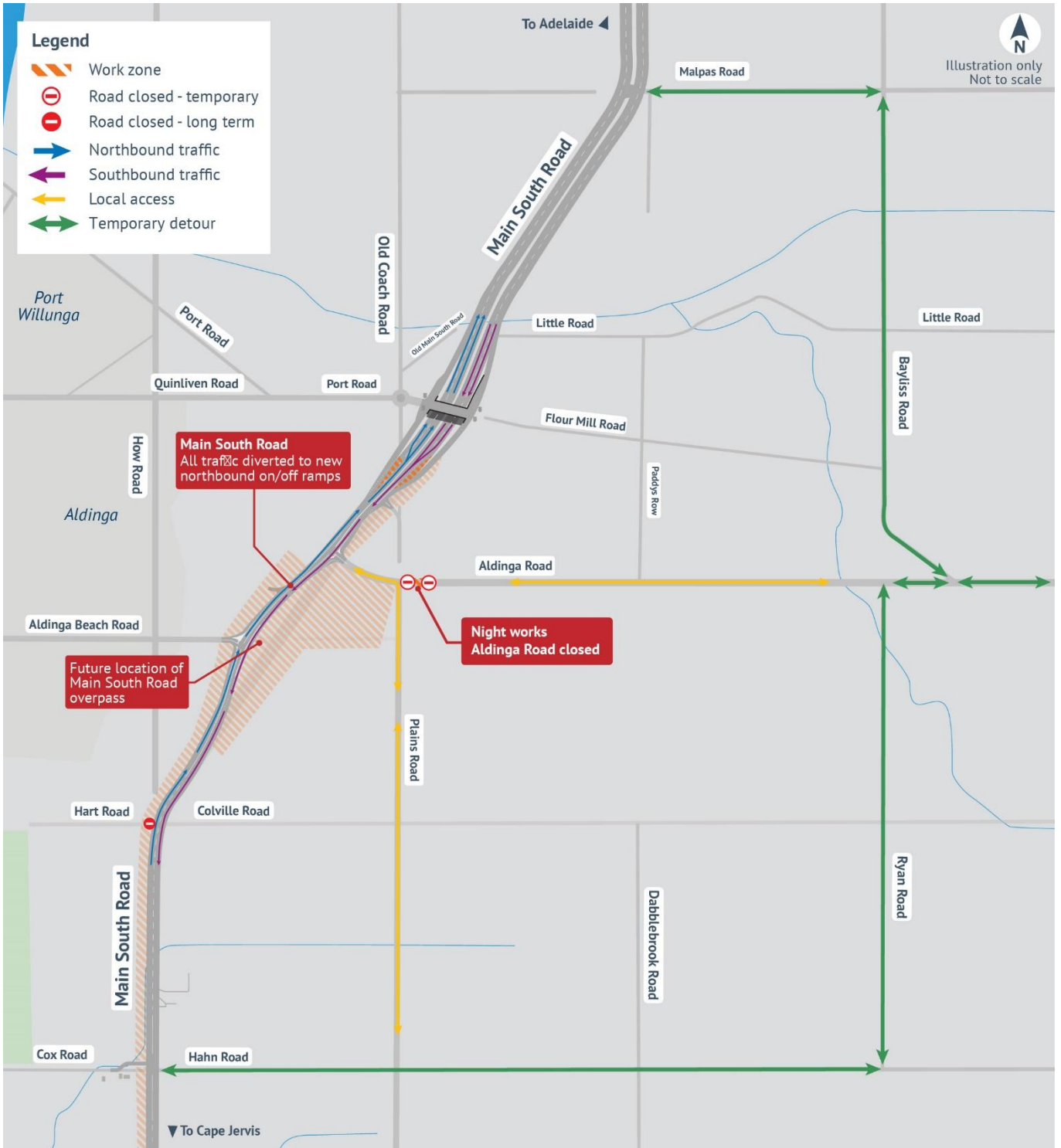
FLEURIEU CONNECTIONS ALLIANCE

Changed Traffic Conditions - 27 October until 6 November 2024



Plains Road, between Aldinga Road and Aldinga Beach Road will be temporarily closed 24 hours a day from 7pm Sunday 27 October until 6pm Wednesday 6 November 2024. During this time, a detour via Hahn Road will be in place. Local access will be maintained, with Traffic Controllers in place to help manage the flow of traffic.

Changed Traffic Conditions - 6 November until 9 November 2024



Between Wednesday 6 November and Saturday 9 November 2024, Aldinga Road east of Plains Road will be closed each night between 7pm and 6am. A detour will be in place via Bayliss Road or Ryan Road. Aldinga Road will reopen during the day, with speed restrictions remaining in place.