

Fleurieu Connections Alliance

Main South Road northbound ramps closure

We're doubling the capacity of Main South Road from Aldinga to Sellicks Beach to improve safety and make your journey more reliable.

The \$810 million Fleurieu Connections project is jointly funded by the Australian and South Australian governments.

What's happening

As we near project completion, we'll be undertaking final asphalt, line marking, drainage installation and shared use path construction works on the northbound on and off ramps at the new Aldinga Interchange.

How this affects you

To undertake these works safely, **from Sunday 30 November** for approximately one week, the northbound off ramp and **from Thursday 11 December** for approximately one week, the northbound on ramp at the Aldinga Interchange will be closed for night works. **The roads will reopen at 7am each day.**

During the off ramp closure, all northbound traffic will be detoured via Hahn Road, Plains Road and Aldinga Road. During the on ramp closure all northbound traffic will be detoured via Aldinga Beach Road, How Road and Port Road. Some noise disturbance can be expected, but we'll try to keep these disturbances to a minimum. Please follow traffic management directions while work is in progress.

Due to the nature of construction, work programs and traffic arrangements may need to change at short notice. Stay up to date by registering for SMS updates. Visit www.fcalliance.com.au/SMS for more information or to register.

When

Sunday 30 November 2025
for approximately two weeks

Hours of work

Between 7pm and 7am

Where

Northbound on and off ramps at the Aldinga Interchange

More information

www.fcalliance.com.au

info@fcalliance.com.au

1300 896 826 (24hrs)



Safer access onto and across Main South Road



Improving safety and making your journey more reliable



Supporting over 400 jobs each year



Australian Government

BUILDING AUSTRALIA



Government
of South Australia

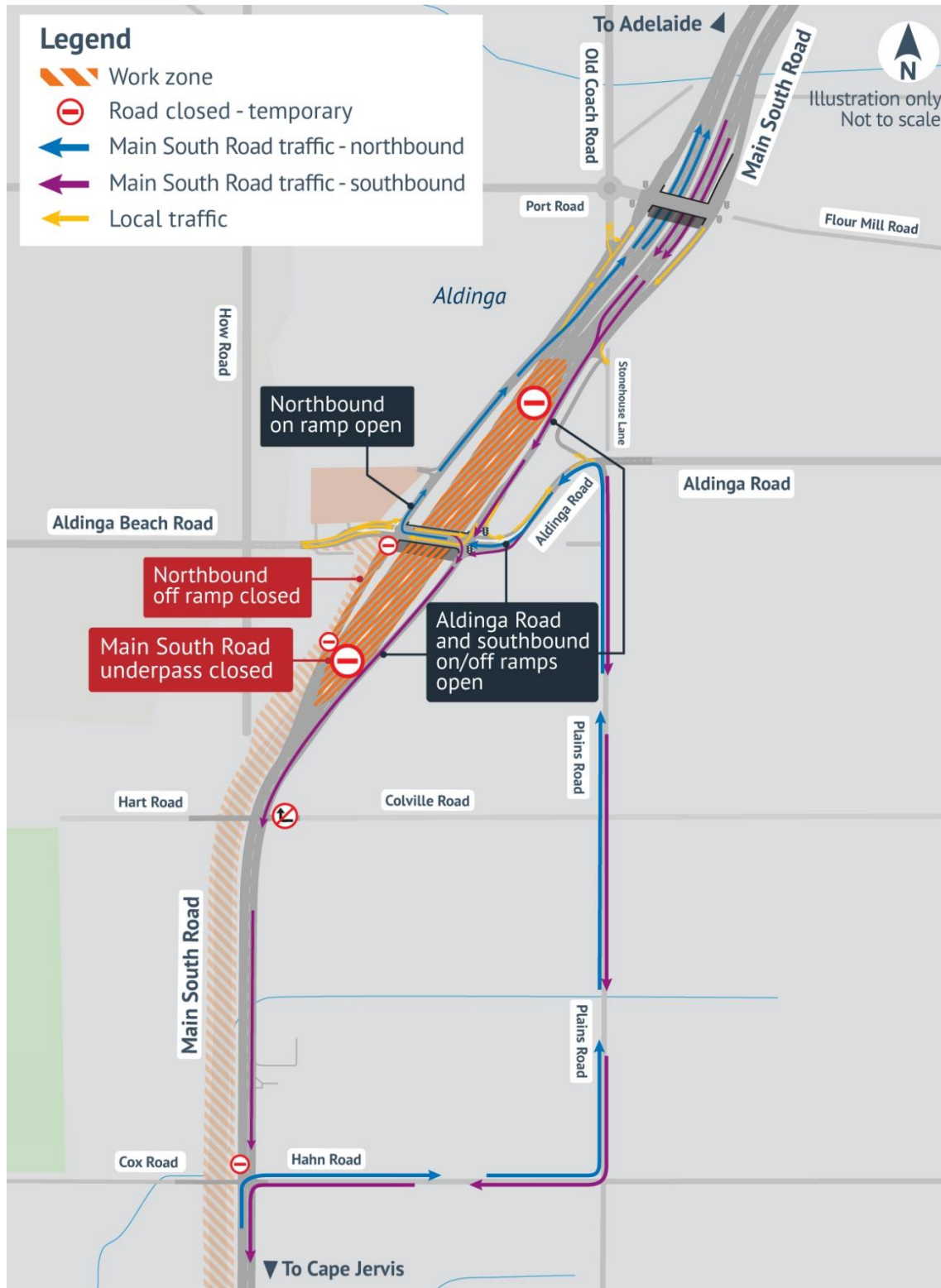
Department for Infrastructure
and Transport

**SA IS
BUILDING**
→

Delivered by

**FLEURIEU
CONNECTIONS
ALLIANCE**

Northbound off ramp closure – from 30 November for approximately one week



From Sunday 30 November for approximately one week, the northbound off ramp at the Aldinga Interchange will be closed for night works between 7pm and 7am. During this time traffic will be detoured via Hahn Road, Plains Road and at the Aldinga Interchange. The roads will reopen at 7am each day.

Northbound on ramp closure – from 11 December for approximately one week



From Thursday 11 December for approximately one week, the northbound on ramp at the Aldinga Interchange will be closed for night works between 7pm and 7am. During this time traffic will be detoured via Aldinga Beach Road, How Road and Port Road. The roads will reopen at 7am each day.