



Fleurieu Connections Alliance

Project Update – June 2025

We're doubling the capacity of Main South Road from Aldinga to Sellicks Beach to improve safety and make your journey more reliable.

The \$810 million Fleurieu Connections project is jointly funded by the Australian and South Australian governments.

Over the coming months, we will be laying new asphalt, installing new kerbing, lighting and completing other finishing works to connect Stage 1 and 2 of the Main South Road Duplication Project. These works will be on and around Main South Road and the Port Road Bridge interchange at Aldinga.

To help you understand the impacts of the upcoming works and detours, we've collated the key works program over the next pages. Some noise disturbance can be expected, but we'll try to keep these disturbances to a minimum. Please follow traffic management directions while work is in progress. In addition, we will contact you if the work may directly impact your property.

Adverse weather may impact our works, but we'll keep you updated via our website.



Better connections to the iconic Fleurieu Peninsula.



New dedicated path for pedestrians and cyclists



Supporting growing communities with the infrastructure they need



Making it greener, with more native trees



Boosting South Australia's economy, supporting over 400 jobs each year



Australian Government

BUILDING AUSTRALIA



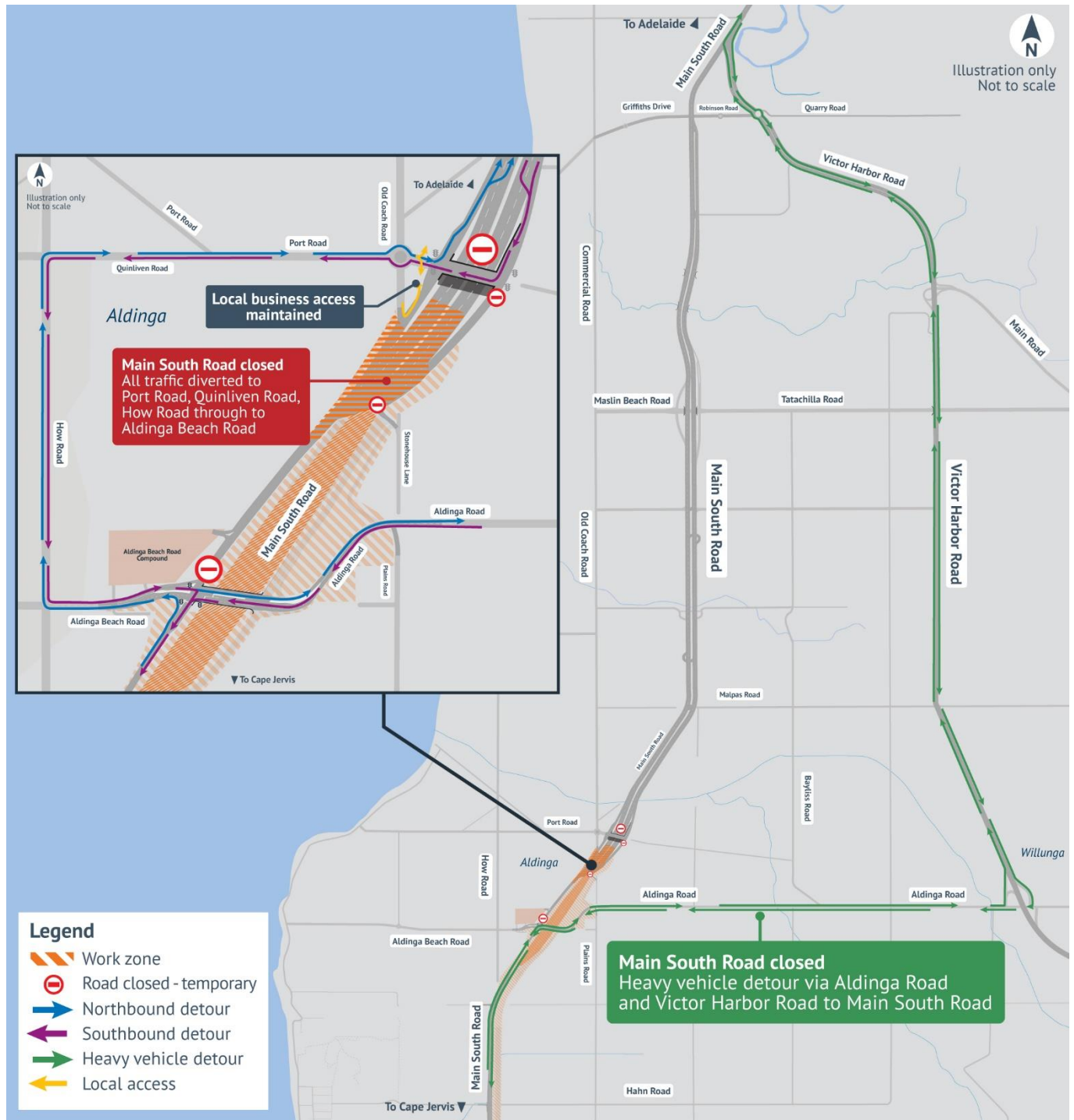
Government
of South Australia
Department for Infrastructure
and Transport

Delivered by

**FLEURIEU
CONNECTIONS
ALLIANCE**

From Sunday 15 June 2025 for 1 week

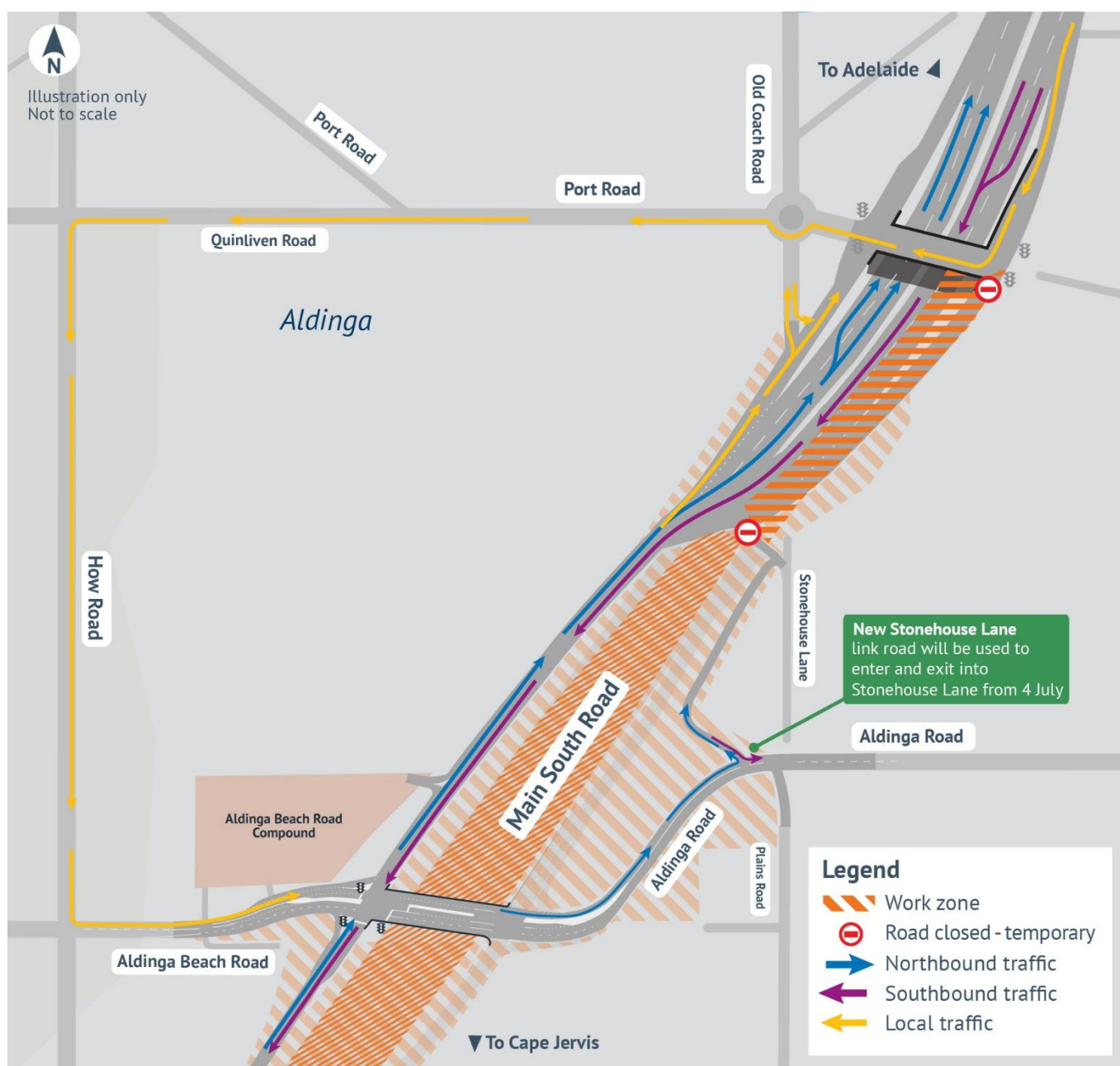
Port Road underpass at Aldinga along with Main South Road between Port Road and Aldinga Beach Road will be temporarily closed for night works (7pm to 7am) to allow us to safely undertake asphalt and other finishing works. All traffic will detour via Aldinga Beach Road, How Road and Port Road during the works. See map below for detour information. The underpass will reopen each morning at 7am, with speed restrictions in place.



From Monday 23 June 2025

The southbound ramp onto Main South Road from Port Road will be closed for night works (7pm to 7am) until Friday 4 July 2025. During these works, traffic travelling south from Port Road will detour via How Road and Aldinga Beach Road. The ramp will reopen each morning. See map below for detour information.

From 7pm Friday 4 July 2025 until 7am Monday 20 July 2025 (during school holidays), the off-ramp will be closed 24 hours a day. Traffic travelling south from Port Road will be required to detour via How Road and Aldinga Beach Road. See map below for detour information. Further night works (between 7pm to 7am) may be required from Monday 20 July 2025 for one week.



From Monday 28 July 2025 for 3 weeks

The northbound offramp to Port Road from Main South Road (past Old Coach Road) will be closed 24 hours a day to safely undertake asphalt works. Left turns out of Old Coach Road will not be permitted during this time. Access to all businesses in this area will be maintained via Old Coach Road and Port Road. See map below for detour information.

